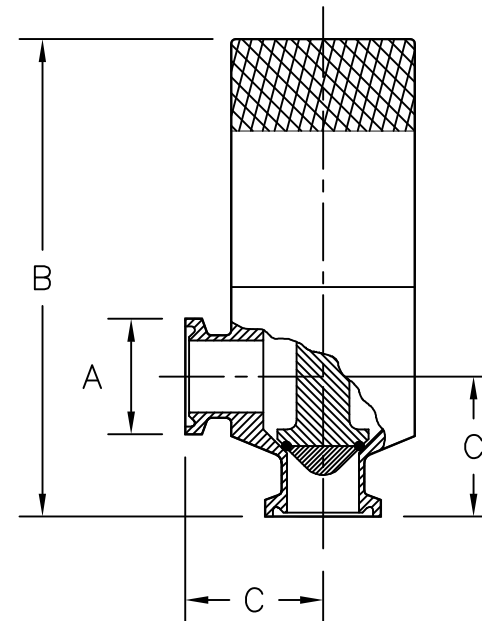


A	B		C	
	mm	in.	mm	in.
1/2"	104	4.10	30	1.18
3/4"	104	4.10	30	1.18
1"	285	11.2	70	2.75
1 1/2"	285	11.2	70	2.75
2"	335	13.2	89	3.50
2 1/2"	335	13.2	89	3.50
3"	414	16.3	159	6.25
4"	434	17.1	159	6.25
6"	770	30.3	138	5.43

*STANDARD 316L WET END COMPONENTS



(SIZES 1/2"–3/4")

THIS DRAWING AND ALL IDEAS INCORPORATED IN ITS DESIGN IS THE EXCLUSIVE PROPERTY OF FLOWTECH, INC. ITS ACCEPTANCE CONSTITUTES AN AGREEMENT THAT IT SHALL BE TREATED AS A CONFIDENTIAL DOCUMENT USED FOR NO OTHER PURPOSE THAN TO AID IN ITS CONSTRUCTION, THAT IT IS TO BE RETURNED UPON REQUEST, AND THAT IT IS NOT TO BE DISCLOSED OR COPIED EXCEPT AS AUTHORIZED IN WRITING BY FLOWTECH, INC.



MATERIAL	BY	DATE	DWG. TITLE	
FINISH (UNLESS NOTED ON DWG.)	DRAWN		#46 PRESSURE RELIEF VALVE	
WEIGHT	CHECKED		SIZE	DWG. NO.
	APP'D		0.5"–6.0"	460999
	SCALE		REV. NO.	2
	ALL DIMENSIONS IN INCHES		RELEASE DATE	NOV. 9, 2003
			SHEET	1 OF 1