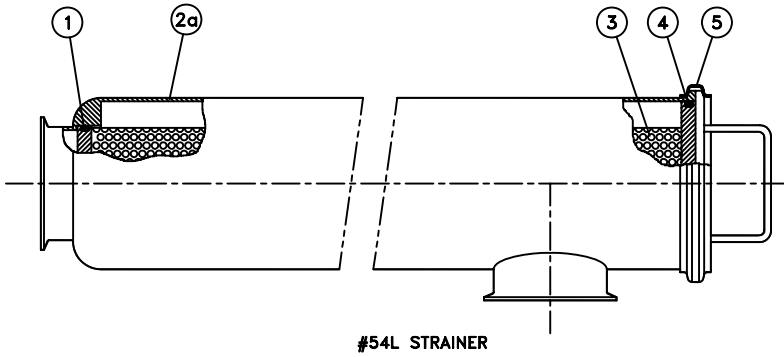
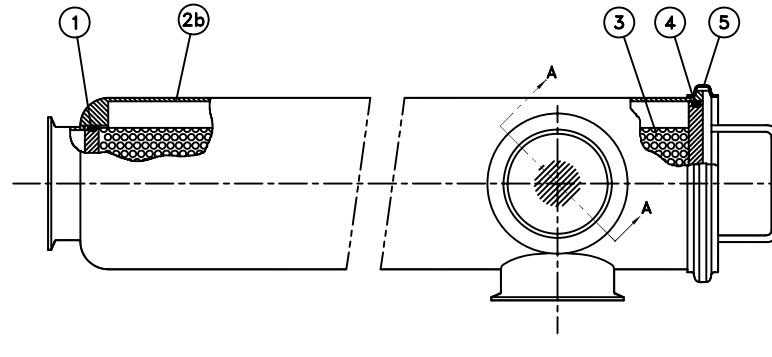


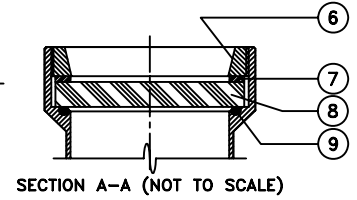
REVISIONS			
SYMBOL	DESCRIPTION	DATE	BY
①	Gasket Part# from 6319 to 6315	Aug 05, 2011	PO



#54L STRAINER



#55L STRAINER



CONN. SIZE	ITEM	SCREEN AREA: (1.0 FT <sup>2</sup> )				SCREEN AREA: (2.25 FT <sup>2</sup> )				O-RING	CLAMP	RETAINER RING	PTFE WASHER	GLASS	O-RING
		1	2a	2b	3	2a	2b	3	3						
1.5"	P.N.	4286	540100	550100	540019	540106	550106	540020	4156	540090	520014	520021	520028	4275	
	Pcs.	1	1	1	1	1	1	1	1	1	2	2	2	2	
2"	P.N.	4286	540101	550101	540019	540107	550107	540020	4156	540090	520014	520021	520028	4275	
	Pcs.	1	1	1	1	1	1	1	1	1	2	2	2	2	
2.5"	P.N.	4286	540102	550102	540019	540108	550108	540020	4156	540090	520014	520021	520028	4275	
	Pcs.	1	1	1	1	1	1	1	1	1	2	2	2	2	
3"	P.N.	4286	540103	550103	540019	540109	550109	540020	4156	540090	520014	520021	520028	4275	
	Pcs.	1	1	1	1	1	1	1	1	1	2	2	2	2	
4"	P.N.	4286	540104	550104	540019	540110	550110	540020	4156	540090	520014	520021	520028	4275	
	Pcs.	1	1	1	1	1	1	1	1	1	2	2	2	2	

CONN. SIZE	ITEM	SCREEN AREA: (5.0 FT <sup>2</sup> )				CLAMP GASKET	CLAMP	RETAINER RING	PTFE WASHER	GLASS	O-RING
		1	2a	2b	3						
1.5"	P.N.	4287	540112	550112	540022	6315	540091	540024	540028	540032	540036
	Pcs.	1	1	1	1	1	1	2	2	2	2
2"	P.N.	4287	540113	550113	540022	6315	540091	540024	540028	540032	540036
	Pcs.	1	1	1	1	1	1	2	2	2	2
2.5"	P.N.	4287	540114	550114	540022	6315	540091	540024	540028	540032	540036
	Pcs.	1	1	1	1	1	1	2	2	2	2
3"	P.N.	4287	540115	550115	540022	6315	540091	540024	540028	540032	540036
	Pcs.	1	1	1	1	1	1	2	2	2	2
4"	P.N.	4287	540116	550116	540022	6315	540091	540024	540028	540032	540036
	Pcs.	1	1	1	1	1	1	2	2	2	2
6"	P.N.	4287	540117	550117	540022	6315	540091	540024	540028	540032	540036
	Pcs.	1	1	1	1	1	1	2	2	2	2

- SEAL MATERIALS ARE SPECIFIED AS FOLLOWS:  
 #-E (EPDM)    #-V (VITON)  
 #-S (SILICONE)    #-T (TEFLON ENCAPSULATED VITON)
- INSERT SCREEN SIZES ARE SPECIFIED AS FOLLOWS:  
 #-100M (100 mesh)    #-50M (50 mesh) and so on...

THIS DRAWING AND ALL IDEAS INCORPORATED IN ITS DESIGN IS THE EXCLUSIVE PROPERTY OF UNIBLOC-PUMP, INC. ITS ACCEPTANCE CONSTITUTES AN AGREEMENT THAT IT SHALL BE TREATED AS A CONFIDENTIAL DOCUMENT USED FOR NO OTHER PURPOSE THAN TO AID IN ITS CONSTRUCTION, THAT IT IS TO BE RETURNED UPON REQUEST, AND THAT IT IS NOT TO BE DISCLOSED OR COPIED EXCEPT AS AUTHORIZED IN WRITING BY UNIBLOC-PUMP, INC.

**UNIBLOC-PUMP**

MATERIAL	BY	DATE
FINISH (UNLESS NOTED ON DWG.)	DRAWN	JPZ
WEIGHT	CHECKED	
	APP'D	
	SCALE	NONE
	ALL DIMENSIONS IN MM	

DWG. TITLE	
#54L & #55L STRAINER COMPONENTS	
SIZE	DWG. NO.
	540996
RELEASE DATE AUG. 05, 2011 SHEET 1 OF 1	